

YEF350 SERIES 350W



YEF series are single-output slim type power supply and for wide range AC input from 90VAC to 264VAC. The series to the high efficiency up to 95%, and operates from -30°C ~ 70°C under air convection without fan.

The series serves as a high performance power supply, solution for various industrial applications.

CCC cULus CE UK RoHS (Pending)

Features



Universal AC Input/ Full Range



Cooling by free air convection



Built-in active PFC function



-30~+70°C working temperature



Protection: Short Circuit/Overload/
Over Voltage/Over Temperature

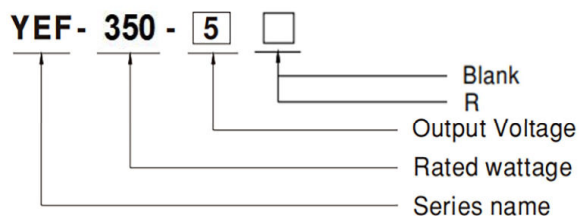


Three Years Warranty

Model Information

YingjiaoPart Number	DCVoltage	RatedCurrent	RatedPower	VOLTAGE ADJ.RANGE	Max.Capacitive Load
YEF350-3.3□	3.3V	60A	198W	3.2~3.5V	12000uF
YEF350-4.2□	4.2V	60A	252W	3.6~4.4V	12000uF
YEF350-5□	5V	60A	300W	4.5~5.5V	12000uF
YEF350-12□	12V	29.2A	350.4W	11.4~12.6V	10000uF
YEF350-15□	15V	23.4A	351W	14.3~15.8V	9000uF
YEF350-24□	24V	14.6A	350.4W	22.8~25.2V	8000uF
YEF350-36□	36V	9.75A	351W	34.2~37.8V	6000uF
YEF350-48□	48V	7.3A	350.4W	45.6~50.4V	4000uF
YEF350-55□	55V	6.3A	346.5W	45~58V	3000uF

Model Encoding



Type	Description
Blank	Enclosed
R	Buit-in DC ok active signal and redundant function .

Input

VOLTAGE RANGE	90~264VAC 127~370VDC
FREQUENCY RANGE	47~63Hz
POWER FACTOR (Typ.)	PF≥0.94/230VAC , PF≥0.98/115VAC at full load
AVERAGE EFFICIENCY(Typ.)	88.5% YEF350-3.3□ 89.0% YEF350-4.2□ 90.0% YEF350-5□ 91.0% YEF350-12□ 92.0% YEF350-15□ 94.0% YEF350-24□ 94.0% YEF350-36□ 94.0% YEF350-48□ 94.0% YEF350-55□
AC CURRENT(Typ.)	4A/115VAC 2A/230VAC
INRUSH CURRENT(Typ.)	Cold Start 30A/115VAC Cold Start 60A/230VAC
LEAKAGE CURRENT	<0.75mA/240VAC

Output

RIPPLE & NOISE(max.)	150mVp-p	YEF350-3.3□
	150mVp-p	YEF350-4.2□
	200mVp-p	YEF350-5□
	200mVp-p	YEF350-12□
	200mVp-p	YEF350-15□
	240mVp-p	YEF350-24□
	240mVp-p	YEF350-36□
	240mVp-p	YEF350-48□
	300mVp-p	YEF350-55□
VOLTAGE TOLERANCE	±2.0%	YEF350-3.3□
	±2.0%	YEF350-4.2□
	±2.0%	YEF350-5□
	±1.0%	YEF350-12□
	±1.0%	YEF350-15□
	±1.0%	YEF350-24□
	±1.0%	YEF350-36□
	±1.0%	YEF350-48□
	±1.0%	YEF350-55□
LINE REGULATION	±0.5%	YEF350-3.3□
	±0.5%	YEF350-4.2□
	±0.5%	YEF350-5□
	±0.3%	YEF350-12□
	±0.3%	YEF350-15□
	±0.3%	YEF350-24□
	±0.3%	YEF350-36□
	±0.3%	YEF350-48□
	±0.3%	YEF350-55□
LOAD REGULATION	±1.0%	YEF350-3.3□
	±1.0%	YEF350-4.2□
	±1.0%	YEF350-5□
	±0.5%	YEF350-12□
	±0.5%	YEF350-15□
	±0.5%	YEF350-24□
	±0.5%	YEF350-36□
	±0.5%	YEF350-48□
	±0.5%	YEF350-55□
SETUP,RISE TIME	2000ms, 80ms/230VAC at full load	
	3000ms, 80ms/115VAC at full load	
HOLD UP TIME (Typ.)	10ms/230VAC at full load	
	10ms/115VAC at full load	

Protection

SHORT CIRCUIT	Protection type: Hiccup mode, recovers automatically after fault condition is removed
OVER LOAD	110%-140% Rated Output Power Protection type: Hiccup mode, recovers automatically after fault condition is removed
OVER VOLTAGE	3.3V:3.8~4.6V 4.2V:4.62~5.46V 5V:5.75~6.75V 12V:13.2~15.6V 15V:16.5V~19.5V 24V:26.4~31.2V 36V:39.6~46.8V 48V:52.8~62.4V 55V:60-69V Protection type :Shut down O/P voltage,re-power on to recover
OVER TEMPERATURE	Protection type :Shut down O/P voltage, recovers automatically after temperature goes down

FUNCTION

DC OK SIGNAL(Optional)	Contact rating(max.):15Vdc/10mA resistive load
REDUNDANT(Optional)	For parallel connection protection:For parallel applications, when one PSU can not work, the another one will be automatically enabled. This can prevent the system crash, and provide the reliability of system.

Environment

WORKING TEMP.	-30 °C to +70 °C (Refer to "Derating Curve")
Working Humidity	20 ~ 90% RH Non-Condensing
STORAGE TEMP, HUMIDITY	-40°C ~ +85°C,10 ~ 95% RH non-condensing
TEMP. COEFFICIENT	± 0.03%/°C(0~50°C)
VIBRATION	10~ 500Hz, 5G 10min./1cycle, 60min. each along X, Y,Z axes
MTBF	253.4K hrs min. MIL-DHBK-217F;
OVER VOLTAGE CATEGORY	III;According to EN62368-1,altitude up to 2000 meters
SAFETY PROTECTION	CLASS I

SAFETY & EMC

SAFETY STANDARDS	BS EN/EN62368-1, BS EN/EN60335-1,EN/EN61558-1,BS EN/EN61558-2-16
WITHSTAND VOLTAGE	I/P-O/P:3.75KVAC I/P-FG:2KVAC O/P-FG:1.25KVAC
ISOLATION RESISTANCE	I/P-O/P, I/P-FG, O/P-FG:100M Ohms/ 500VDC/25 °C/70% RH
EMC EMISSION	Compliance to BS EN/EN55032 (CISPR32) Class B, BS EN/EN61000-3-2,-3
EMC IMMUNITY	Compliance to BS EN/EN61000-4-2,3,4,5,6,8,11,BS EN/EN55035

Note

- 1.All parameters NOT specially mentioned are measured at 230VAC input, rated load and 25°C of ambient temperature.
2. Ripple & noise are measured at 20MHz of bandwidth by using a 12" twisted pair-wire terminated with a 0.1uf & 47uf parallel capacitor.
3. Tolerance :includes set up tolerance, line regulation and load regulation.
4. Derating may be needed under low input voltages. Please check the derating curve for more details.
5. The ambient temperature derating of 3.5°C/1000m is needed for operating altitude greater than 2000m(6500ft)
- 6.The power supply is considered a component which will be installed into a final equipment. The final equipment must be re-confirmed that it still meets EMC directives.
7. R type efficiency slightly less than the Blank type, according to the actual measurement.
8. Inrush current parameter has 10% tolerance.

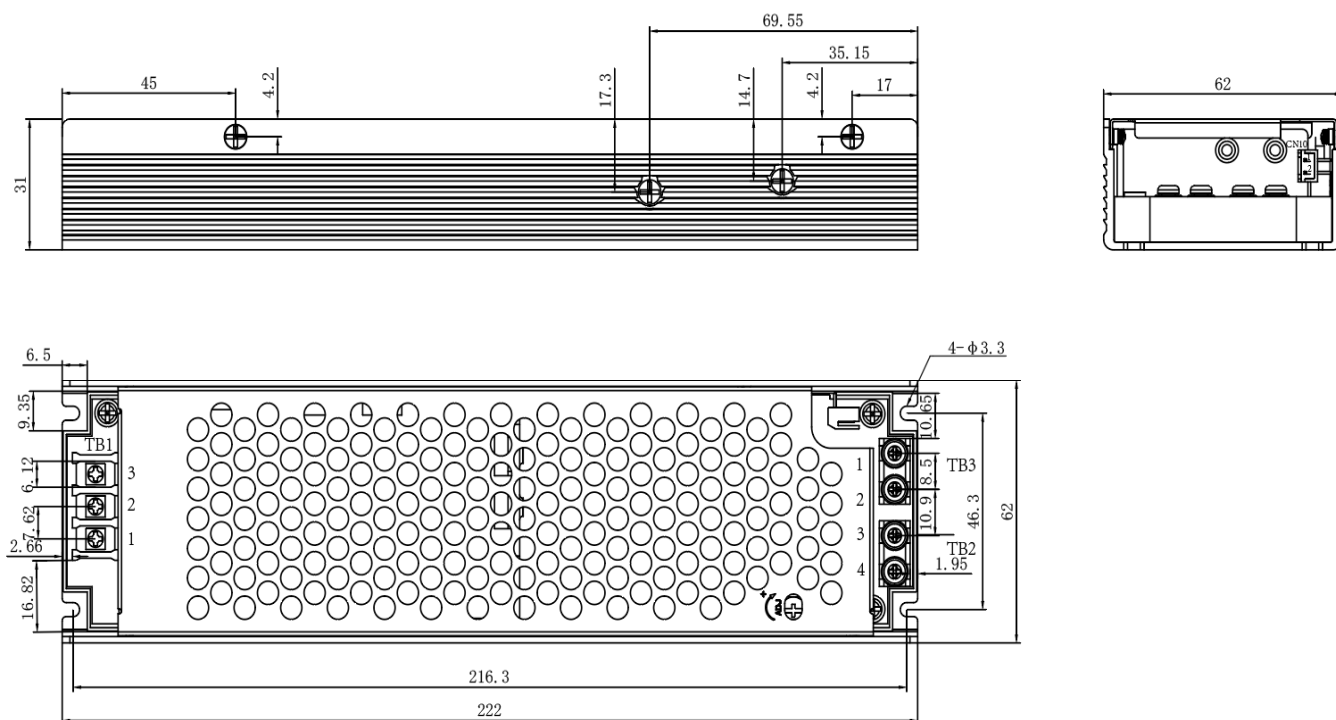
Dimensions & Weight

Length:	222mm/8.74in
Width:	62mm/2.44in
Height:	31mm/1.22in
Weight:	700g

Packing

Carton Size:	31 × 28.5 x 23.5 CM
	12.2 x 11.22 x9.25 in
Master Carton Quantities:	20pcs/Carton

Dimensions and Installation



AC Input Terminal(TB1) pin NO. Assignment

Pin No.	Assignment	Terminal	Max mounting torque
1	AC/L	(DEGSON) DG28C-B-03P	5Kgf-cm
2	AC/N		
3	⏏		

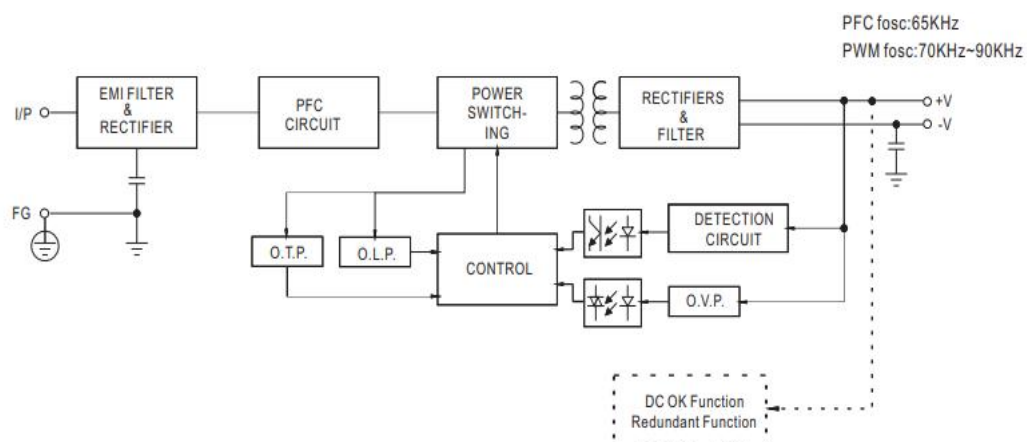
DC Output Terminal(TB2,TB3) pin NO. Assignment

Pin No.	Assignment	Terminal	Max mounting torque
1,2	-V	MEL-400-02P	8Kgf-cm
3,4	+V		

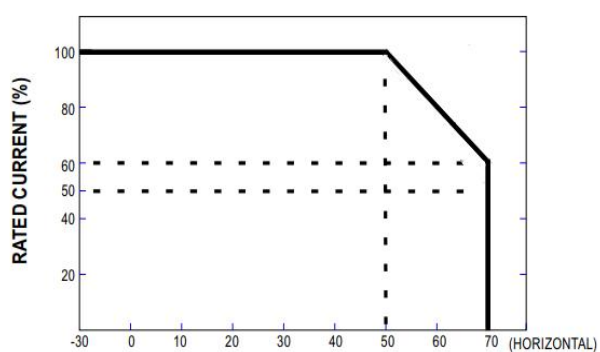
DC OK Connector(CN1):JST B2B-PH-K-S or equivalent

Pin No.	Assignment	Mating Housing	Terminal
1	DC COM1	JST PHR-2 or equivalent	JST SPH-002T-P0.5S or equivalent
2	DC COM2		

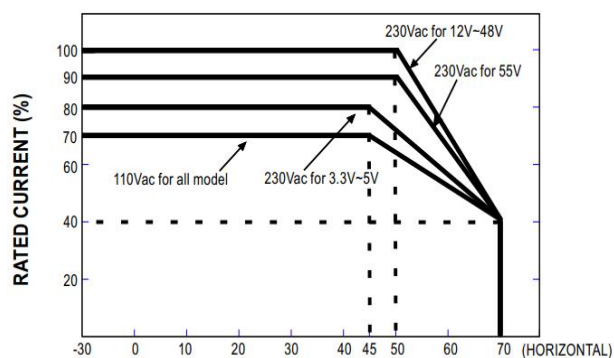
Block Diagram



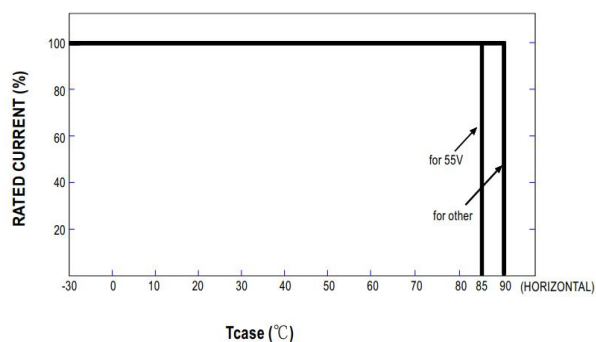
Deduction curve and temperature



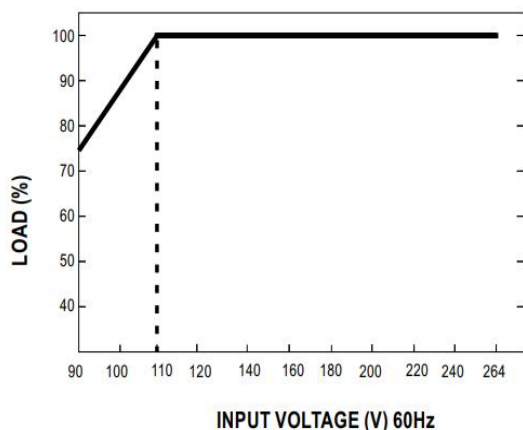
AMBIENT TEMPERATURE (°C)



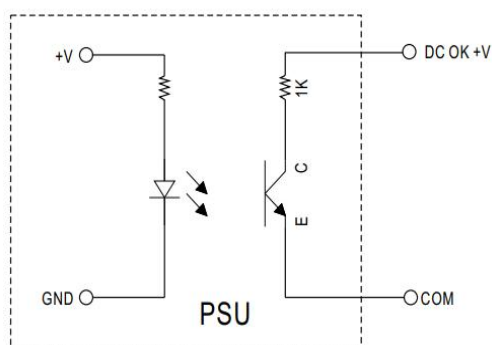
AMBIENT TEMPERATURE WITHOUT ALUMINUM PLATE (°C)



Minus output and input voltage curves



DC OK Relay Contact

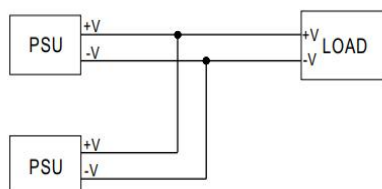


Optocoupler C-E Pin Conduction	PSU turns on	DC ok
Optocoupler C-E Pin Open	PSU turns off	DC fail
Optocoupler Rating(max.)	15Vdc/10mA resistive load	

DC OK is a collector shorted signal. It is used by an optocoupler in the power supply which indicates the output status of the power supply.

Redundant function

- (1) YEF Series is built-in redundant function and can be connected 2 units in parallel.
- (2) When in parallel operation the maximum load should not be greater than the rated power of any PSU.



Installation Diagram

1. Operate with additional aluminum plate

In order to meet the "Derating Curve" and the "Static Characteristics", YEF series must be installed onto an aluminum plate (or the cabinet of the same size) on the bottom. The size of the suggested aluminum plate is shown as below. And for optimizing thermal performance, the aluminum plate must have an even and smooth surface (or coated with thermal grease), and YEF series must be firmly mounted at the center of the aluminum plate.

2. It is suggested to install the product with M3 combination screws, and the product must be firmly installed at the center of the aluminum plate.

